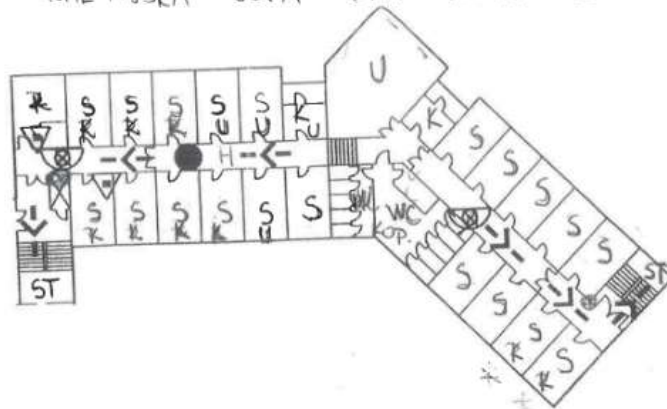


Dijaski dom KMETIJSKA SOLA GRM NOVO MESTO



$$\begin{aligned}
 P &= 18,3 \text{ m}^2 \quad 1 \times = 18,3 \text{ m}^2 \\
 S &= 20 \times 13,5 \text{ m}^2 = 270 \text{ m}^2 \\
 K &= 2 \times 10,9 \text{ m}^2 = 21,8 \text{ m}^2 \\
 U &= 1 \times 43 \text{ m}^2 = 43 \text{ m}^2
 \end{aligned}$$